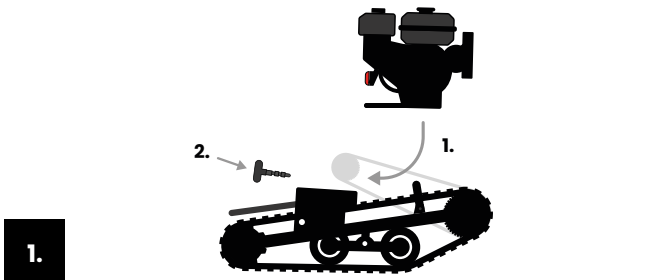
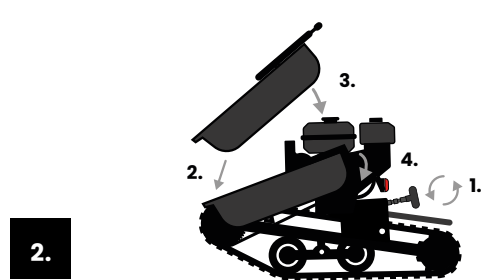


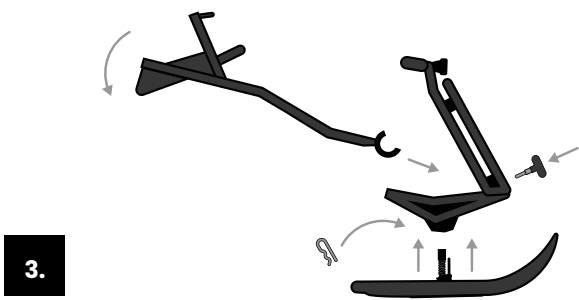
SNOW & SNOW+ QUICK GUIDE



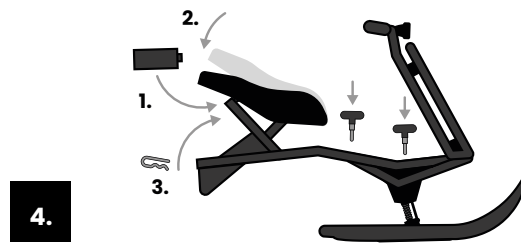
1. Place the motor between the guide rails on the motor stand. Push the threaded rod through the hole in the engine mount. Place the chain on the sprockets and fasten the engine tensioner T-handle.



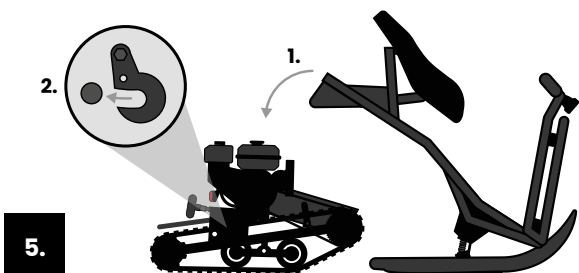
2. Tighten the chain by turning the T-handle until the chain feels firm. Do not over tight it (movement should be approximately 10mm from center point). Install the chain guard and tighten it with the rubber collar. Driving without chain guard is prohibited and may cause injury.



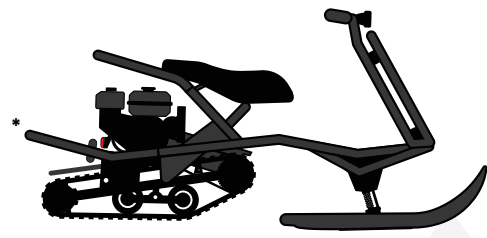
3. Lift the handlebar into upright position and lock it in place with the T-handle. Attach the mid frame onto the front frame. Attach the skis to their respective holes and secure them in place with a short pin.



4. Secure the mid frame and front frame with the two T-handles. Insert the battery under the bench (battery terminals facing up). Secure battery with rubber collar. Place the bench on top of the battery and secure it with the long pin. Place the battery cable over both bench frame tubes and attach it to the red socket. Attach wire and brake cable.



5. Connect the frame to the track package by lowering the frame hooks into the pins in the track package. Please use the bolt on the hooks to fully secure the frame in place to prevent any damages.



Always read the operating and maintenance instructions before use. For more information, see www.vaellan.com/support. If necessary, contact your local dealer or Vaellan Support.

* Vehicle in the picture may have optional accessories.